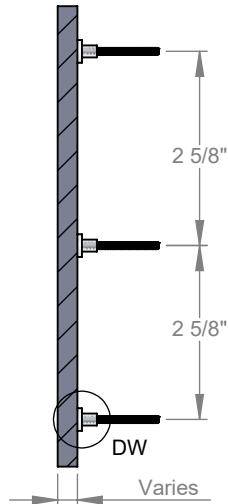
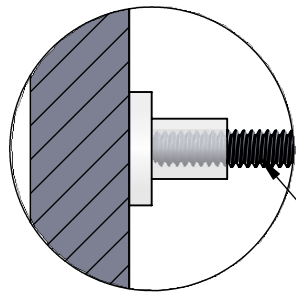


FRONT VIEW II SCALE 1 : 5

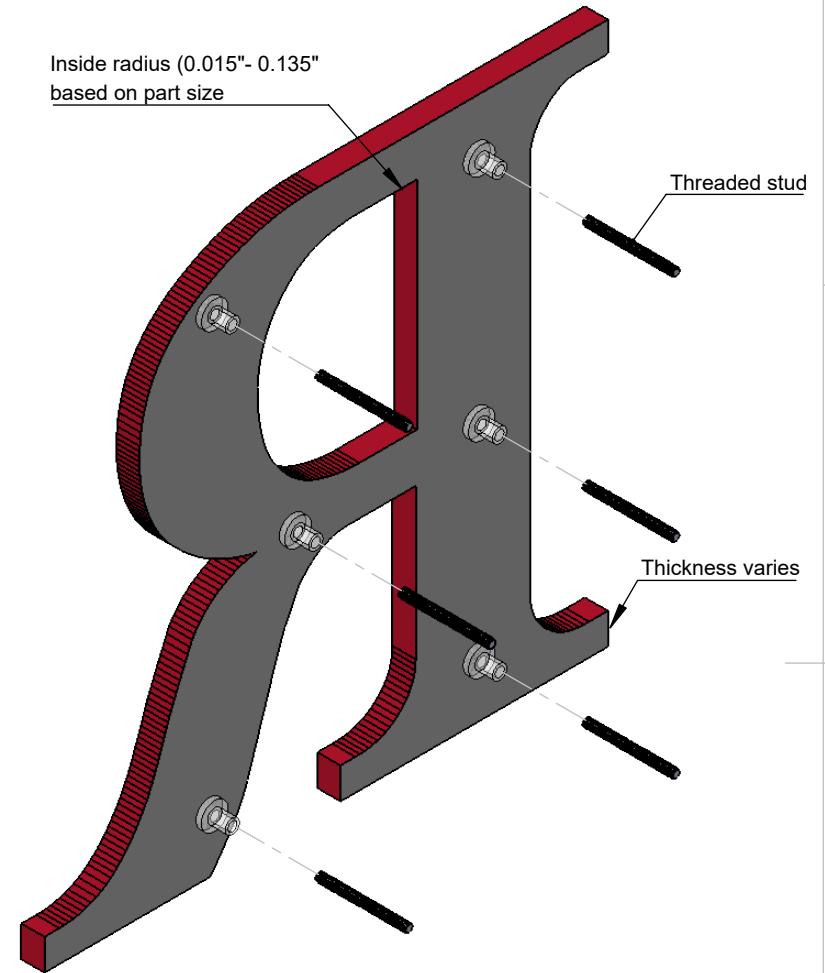


SECTION A-A II SCALE 1 : 5



2" aluminum 10-24 studs standard
(stainless steel optional)

DETAIL DW II SCALE 1 : 1



ISOMETRIC BACK VIEW II SCALE 1 : 3

NOTES:

- Designed for interior use
- Stud blocks aligned 2 5/8" on center, in horizontal rows, to align with brick mortar joints
- Stud length 2" beyond back of letter
- Optional flush stud with min. 3/8" thick acrylic
- Aluminum 10/24 studs- standard, 6/32 studs used on thin strokes
- Min. 0.30" stroke
- Standard Gemini letter styles or per vector art



TITLE:

LASER CUT ACRYLIC - STUD FOR BRICK MOUNT

MATERIAL:

ACRYLIC

PRODUCT TYPE:

PLASTIC LETTERS

DWG NO. LASR80

REV. 9/7/2016

SCALE: AS INDICATED

SHEET 1 OF 1